

Orphans of God

Words and Music by
 JOEL LINDSEY and TWILA LaBAR
Vocals Arranged by Marty Hamby
Track Arranged by Bradley Knight

1 Broadly, warmly (♩=63)

1

$\frac{A^b}{C}$ $D^b2(\#4)D^b$ $\frac{A^bsus}{E^b}$ $\frac{A^bD^bmaj7}{E^b}$ $\frac{A^b}{C}$ $D^b2(\#4)D^b$ $\frac{A^bsus}{E^b}$ $\frac{A^bD^bmaj7}{E^b}$ F

5

LADIES
P

Who here a - mong us has not been bro - ken?

$\frac{A^b}{C}$ D^b2 $\frac{A^b}{E^b}$ $\frac{D^bmaj7}{F}$ E^b

7

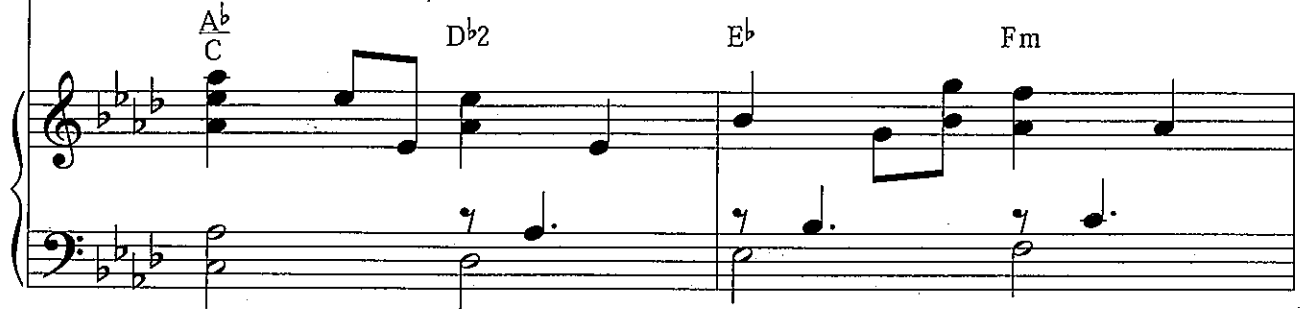
Who here a - mong us is with - out guilt or — pain? So —

$\frac{A^b}{C}$ D^b2 E^bsus E^b

9



— oft a - ban - doned by — our trans - gres - sions, if

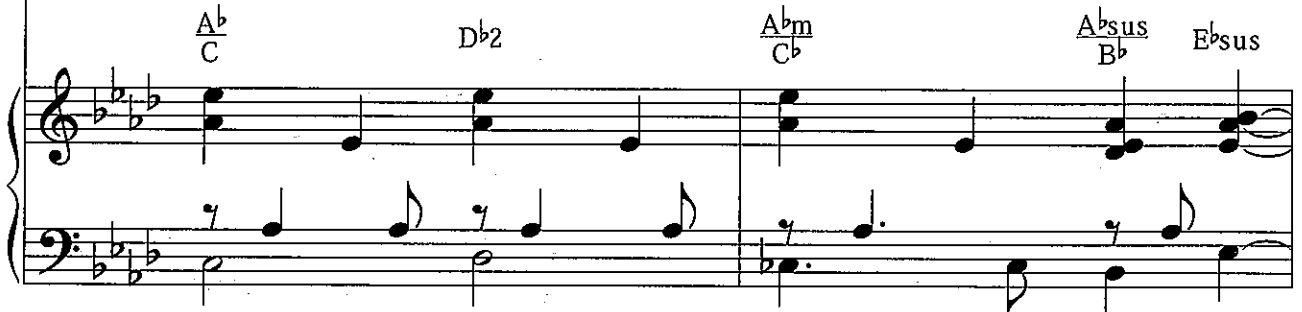


2

11



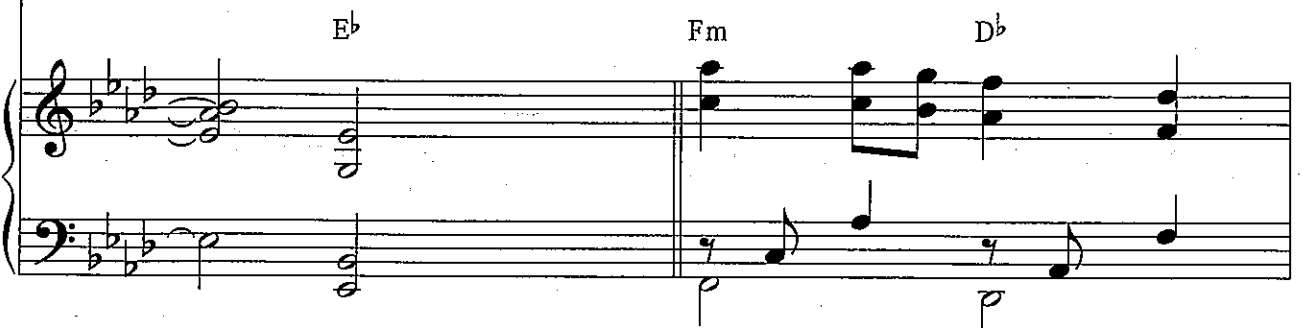
such a thing as grace ex - ists, then grace was made for lives like this.



13



— There are — no stran - gers, there are — no



out - casts, there are no or - phans of God.

D^{\flat} A^{\flat} E^{\flat} Fm D^{\flat}
 A^{\flat} G

So man - y fall - en, but hal - le -

E^{\flat} E^{\flat} Fm D^{\flat}
 sus

3

lu - jah, there are no or - phans of God.

A^{\flat} D^{\flat} A^{\flat} E^{\flat} A^{\flat} D^{\flat}
 C E^{\flat} C D^{\flat} D^{\flat}

mp

22

SOLO

Come ye un-want-ed, and find af - fec - tion.

LADIES

and find af - fec - tion.

Ab sus Eb Dbmaj7 F Ab C Db2 Ab Eb Dbmaj7 F Eb

25

Come all ye wear - y, come and lay down your head. Come

come and lay down your head.

Ab C Db2 Eb sus Eb

27

— ye un - wor - thy; you — are my broth - er. — If

LADIES

If

Ab C Db2 Eb Fm

such a thing as grace ex-ists, then grace was made for lives

such a thing as grace ex-ists,

A^b
C *D^b2* *C^b*

like this. *LADIES and SOLOIST*

f There are no stran - gers, there are no

A^bsus
B^b *E^bsus* *Fm* *D^b*

out - casts, there are no or - phans of God.

D^b
A^b *A^b* *Fm* *D^b*

35



So man - y fall - en, but hal - le -

E^b sus E^b Fm D^b



5

37



lu - jah, there are no or - phans of God.

A^b C D^b A^b E^b E^b



39

SOLO
mp



Oh, bless - ed Fa - ther,

Fm E^b A^b E G^b2



look down up - on us. We are Your chil - dren,

E G^b2 E G^b2

LADIES and SOLOIST

mf

we need Your love. We bow be - fore

A^bm C^b G^b B^b A^b Emaj7 G^b2

Your throne of mer - cy, and seek Your face to

E2 G^b2 Emaj7 G^b2

47

rise a-bove. There are no

N.C. -----

A^bm G^b A^b C B^b A^b E^b F^{sus} F

49

stran - gers, there are no out - casts, there are no

G^m E^b E^b B^b B^b F A

f

51

or - phans of God. So man - y fall - en, but hal - le -

G^m E^b F^{sus} F G^m E^b

10
54

7

lu - jah, there are no or - phans. There are no

56

stran - gers, there are no out - casts, there are no

58

or - phans of God. So man - y

60

Musical staff for voice, measures 60-61. The melody begins with a half note G4, followed by quarter notes A4, Bb4, and C5. A fermata is placed over the final note C5.

fall - en, but hal - le - lu - jah,

Piano accompaniment for measures 60-61. The right hand features chords Gm, Eb, and Bb/D. The left hand has a steady eighth-note bass line. Chords for measure 61 include N.C., D, Eb, F, F/A, and Bb.

62

Musical staff for voice, measures 62-63. The melody consists of quarter notes G4, A4, Bb4, and C5, ending with a fermata over C5.

there are no or - phans of God.

Piano accompaniment for measures 62-63. The right hand has chords Eb2, Bb/D, Bb, F.N.C., Bb/D, Eb2(#4), and Eb. The left hand continues with eighth-note accompaniment.

65

Musical staff for voice, measures 64-65. The melody is mostly sustained chords with a fermata over the final measure.

of God.

Piano accompaniment for measures 64-65. The right hand has chords 7Fsus, Ebmaj7/G, F/A, and Bb. The left hand features a steady eighth-note bass line. A *rit.* marking is present.